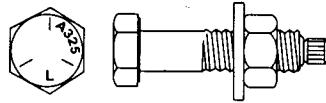


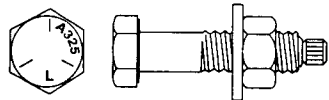
ANSI / ASME B18.5



Hex Head

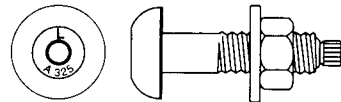
Carriage Bolts Zinc Plated			
Size	Part No.	Packaged Box/Carton	Weight Per 100
5/8 X 5	01169	25/100	43.6
5/8 X 6	01171	25/100	50.9
5/8 X 7	01173	25/75	57.3
5/8 X 8	01175	25/75	64.1
5/8 X 10	01177	25/25	80.4
5/8 X 12	01179	20/20	95.1
3/4 X 2 1/2	01186	25/150	41.0
3/4 X 3	01187	20/120	46.2
3/4 X 3 1/2	01182	20/80	50.4
3/4 X 4	01183	20/80	56.3
3/4 X 5	01184	20/80	65.8
3/4 X 6	01188	20/80	75.8
3/4 X 8	01185	20/20	97.2

A325 Tension Control Bolts Assembled Plain with A194 Grade 2H Nuts and F436 Washers			
Size	Part No.	Packaged Pcs/Keg	Weight Per 100
7/8 X 5 1/2	01554	60	165.3
7/8 X 5 3/4	01555	60	169.7
7/8 X 6	01556	60	173.9
1 X 2 1/4	01560	80	152.3
1 X 2 1/2	01561	80	157.8
1 X 2 3/4	01562	70	163.4
1 X 3	01663	70	168.9
1 X 3 1/4	01564	70	174.4
1 X 3 1/2	01565	60	179.9
1 X 3 3/4	01566	60	185.6
1 X 4	01567	60	191.1
1 X 4 1/4	01568	60	196.6
1 X 4 1/2	01569	55	202.2
1 X 4 3/4	01570	50	207.7
1 X 5	01571	50	213.2
1 X 5 1/4	01572	50	218.7
1 X 5 1/2	01573	50	224.2
1 X 5 3/4	01574	50	229.9
1 X 6	01575	50	235.4



Hex Head

A325 Tension Control Bolts Assembled Plain with A194 Grade 2H Nuts and F436 Washers			
Size	Part No.	Packaged Pcs/Keg	Weight Per 100
3/4 X 1 3/4	01520	200	68.8
3/4 X 2	01521	200	71.9
3/4 X 2 1/4	01522	180	75.0
3/4 X 2 1/2	01523	150	78.0
3/4 X 2 3/4	01524	150	81.1
3/4 X 3	01525	150	84.2
3/4 X 3 1/4	01526	150	87.5
3/4 X 3 1/2	01527	120	90.6
3/4 X 3 3/4	01528	100	93.7
3/4 X 4	01529	100	96.8
3/4 X 4 1/4	01530	100	99.9
3/4 X 4 1/2	01531	100	103.0
3/4 X 4 3/4	01532	100	106.0
3/4 X 5	01533	100	109.1
3/4 X 5 1/4	01534	80	112.2
3/4 X 5 1/2	01535	80	115.5
3/4 X 5 3/4	01536	80	118.4
3/4 X 6	01537	80	121.5
7/8 X 2	01540	120	105.8
7/8 X 2 1/4	01541	120	110.0
7/8 X 2 1/2	01542	120	114.2
7/8 X 2 3/4	01543	100	118.4
7/8 X 3	01544	100	122.6
7/8 X 3 1/4	01545	100	126.8
7/8 X 3 1/2	01546	100	130.9
7/8 X 3 3/4	01547	80	135.1
7/8 X 4	01548	80	139.3
7/8 X 4 1/4	01549	80	143.5
7/8 X 4 1/2	01550	70	147.7
7/8 X 4 3/4	01551	70	152.1
7/8 X 5	01552	60	156.5
7/8 X 5 1/4	01553	60	160.9



Dome Head

A325 Tension Control Bolts Assembled Plain with A194 Grade 2H Nuts and F436 Washers			
Size	Part No.	Packaged Pcs/Keg	Weight Per 100
3/4 X 1 3/4	01620	200	68.8
3/4 X 2	01621	200	71.9
3/4 X 2 1/4	01622	180	75.0
3/4 X 2 1/2	01623	150	78.0
3/4 X 2 3/4	01624	150	81.1
3/4 X 3	01625	150	84.2
3/4 X 3 1/4	01626	150	87.5
3/4 X 3 1/2	01627	120	90.6
3/4 X 3 3/4	01628	100	93.7
3/4 X 4	01629	100	96.8
3/4 X 4 1/4	01630	100	99.9
3/4 X 4 1/2	01631	100	103.0
3/4 X 4 3/4	01632	100	106.0
3/4 X 5	01633	100	109.1
3/4 X 5 1/4	01634	80	112.2
3/4 X 5 1/2	01635	80	115.5
3/4 X 5 3/4	01636	80	118.4
3/4 X 6	01637	80	121.5
7/8 X 2	01640	120	105.8
7/8 X 2 1/4	01641	120	110.0
7/8 X 2 1/2	01642	120	114.2
7/8 X 2 3/4	01643	100	118.4
7/8 X 3	01644	100	122.6
7/8 X 3 1/4	01645	100	126.8
7/8 X 3 1/2	01646	100	130.9
7/8 X 3 3/4	01647	80	135.1